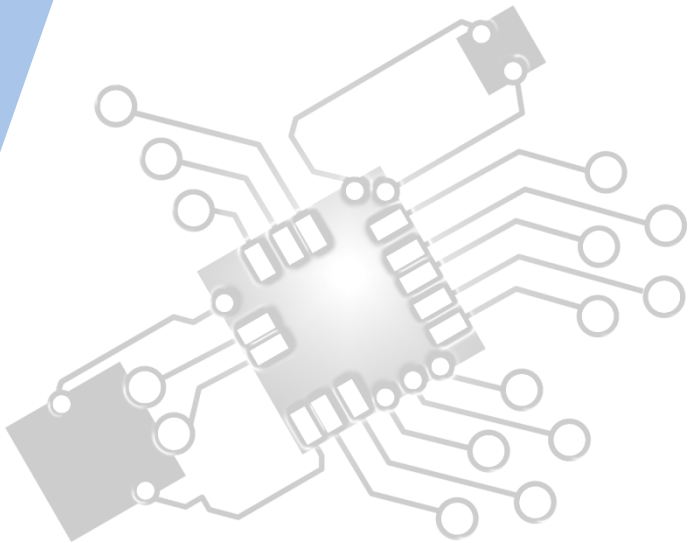




# *Planning & system installation*

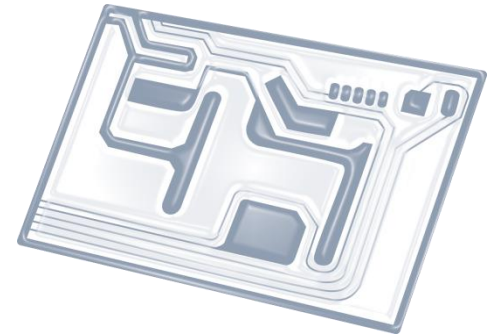
IB Computer Science



*Content developed by  
Dartford Grammar School  
Computer Science Department*



# HL Topics 1-7, D1-4



1: System design



2: Computer Organisation



3: Networks



4: Computational thinking



5: Abstract data structures



6: Resource management



7: Control



D: OOP

# HL & SL 1.1 Overview

## Planning and system installation

- 1.1.1 Identify the context for which a new system is planned.
- 1.1.2 Describe the need for change management
- 1.1.3 Outline compatibility issues resulting from situations including legacy systems or business mergers.
- 1.1.4 Compare the implementation of systems using a client's hardware with hosting systems remotely
- 1.1.5 Evaluate alternative installation processes
- 1.1.6 Discuss problems that may arise as a part of data migration
- 1.1.7 Suggest various types of testing

## User focus

- 1.1.8 Describe the importance of user documentation
- 1.1.9 Evaluate different methods of providing user documentation
- 1.1.10 Evaluate different methods of delivering user training

## System backup

- 1.1.11 Identify a range of causes of data loss
- 1.1.12 Outline the consequences of data loss in a specified situation
- 1.1.13 Describe a range of methods that can be used to prevent data loss

## Software deployment

- 1.1.14 Describe strategies for managing releases and updates



1: System design

2: Computer Organisation



3: Networks

4: Computational thinking



5: Abstract data structures

6: Resource management

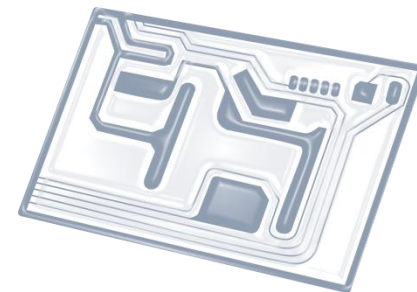


7: Control

D: OOP



# Topic 1.1.3



Outline **compatibility issues** resulting from situations including **legacy** systems or business **mergers**

# Key concepts

**Legacy system** - In computing, a legacy system is an old method, technology, computer system, or application program, that may or may not be supported/available for purchase any more.

**Merger** - a combination of two things, especially companies, into one.

# Mergers are complicated!

- Rarely any two businesses on the world use the exact same systems. So, when two businesses merge, it is a major issue to get their systems to work together. Some issues are listed below:
  - Language differences
  - Part of business operating in a different country than host using an older version of a system
  - If workers delegate, will their laptops work in other departments?
  - If an American and an European businesses merge, their unit systems need to be merged (one uses SI units, one doesn't)
  - Businesses not using same software environment (Microsoft Exchange vs. IBM Lotus Notes)